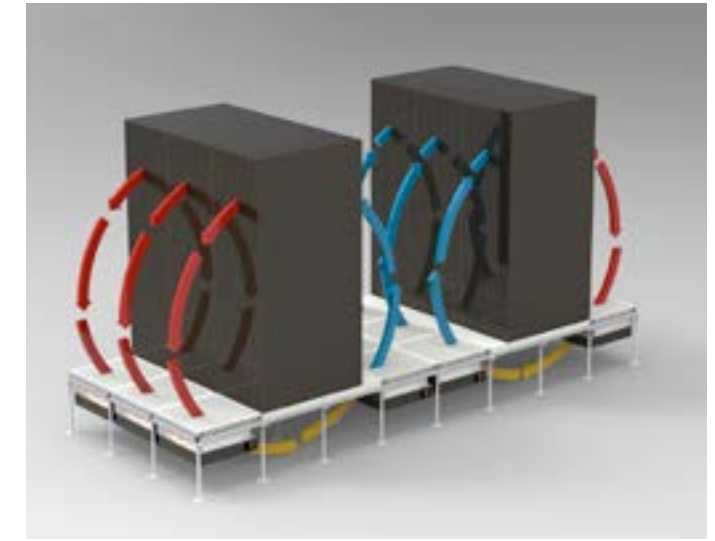
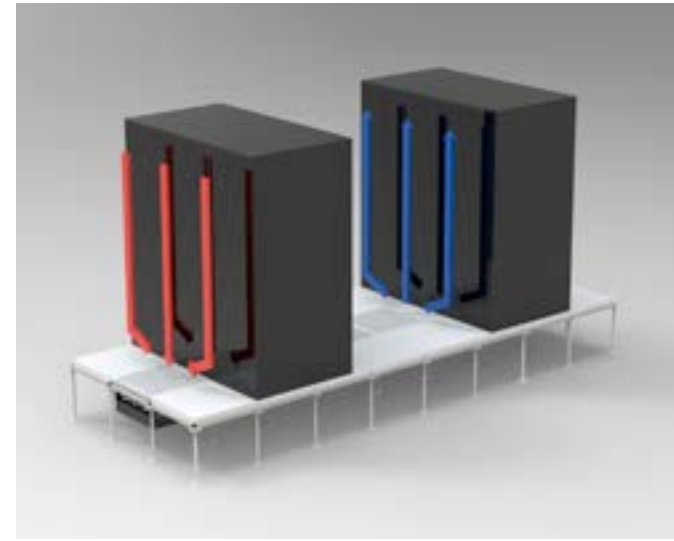


# Active Panels

solution for data centers

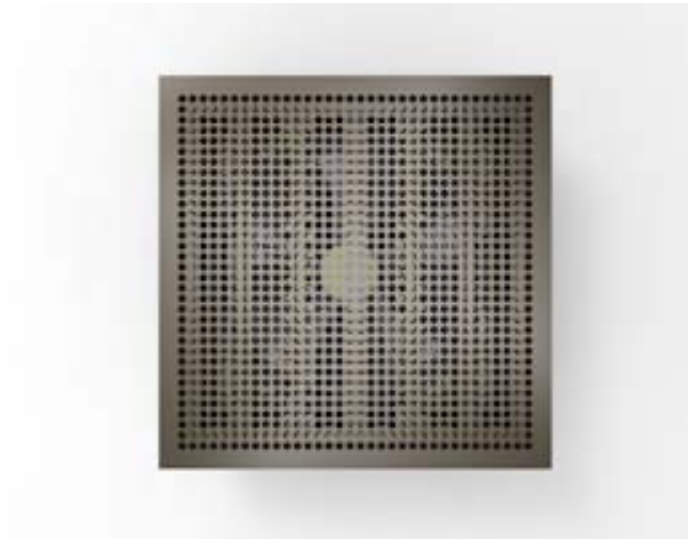


HydrLogic<sup>®</sup>  
panel



Waterchilled Raised Floor Tile  
20 KW per Rack  
Energy efficient  
Space saving  
Retrofittable into existing raised floor installations  
Redundant  
600 x 600 x 350 mm  
Load Capacity 10 KN

Jet<sup>®</sup>  
panel



Air support on critical spots

Demandorineted air supply per rack instead of global pressure into raised floor

Up to 2900 m<sup>3</sup> / h

Redundant options

600 x 600 x 350 mm

Load Capacity 10 KN

EcLogic  
panel



Automatic adaption of free surface depending on heat load in rack

Servo driven damper

Demand oriented air supply at altering performance of server in rack

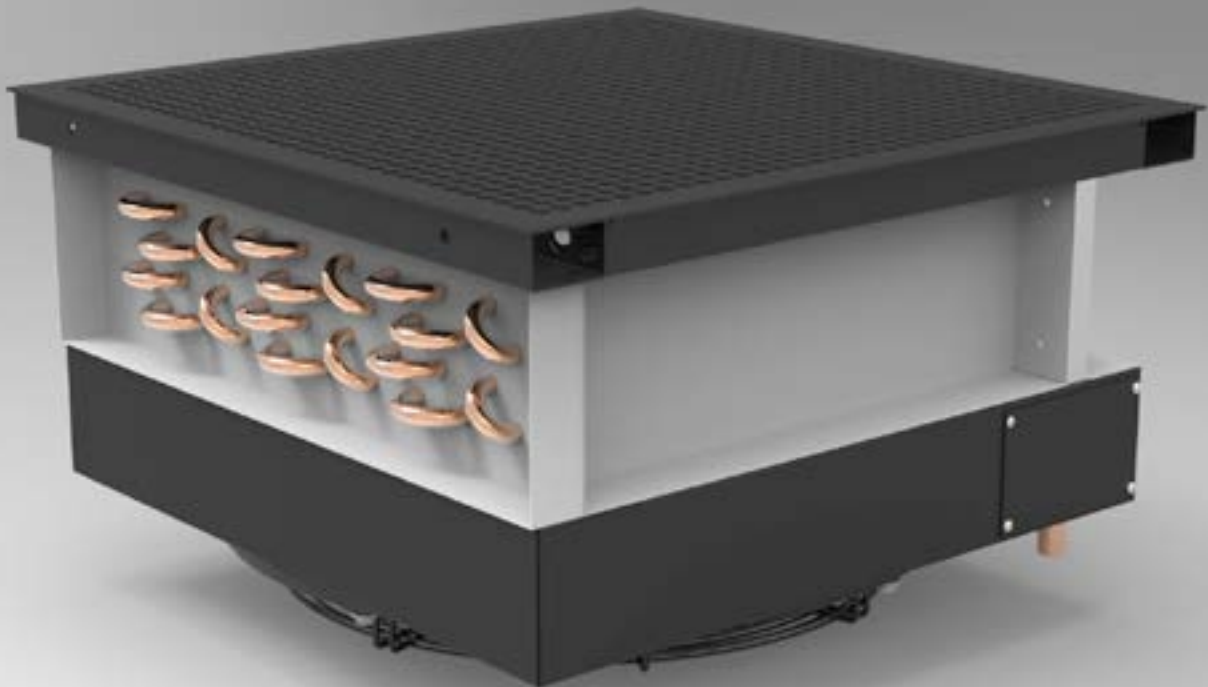
Energy efficient due to saving of unnecessary air circulation

Maximum open surface 39%

Minimum open surface 0,02%

600 x 600 x 350 mm

Load Capacity 10 KN



Weiss Doppelbodensysteme GmbH  
Bänglesäcker 6+9  
73527 Schwäbisch Gmünd - Lindach

Tel.: +49 (0) 7171-976010  
Fax: +49 (0) 7171-9760118  
web: [www.weiss-dbs.de](http://www.weiss-dbs.de)